



Garvey Reservoir Rehabilitation

City of Monterey Park City Council Meeting

June 18, 2024

Garvey Reservoir Rehabilitation

Presentation Overview

- Metropolitan Water District
- Project Description
- Project Scope
- California Environmental Quality Act (CEQA)

The Metropolitan Water District of Southern California

- Established in 1928
- Water wholesaler with 26 member agencies
- Treats and delivers drinking water to 19 million people in Southern California



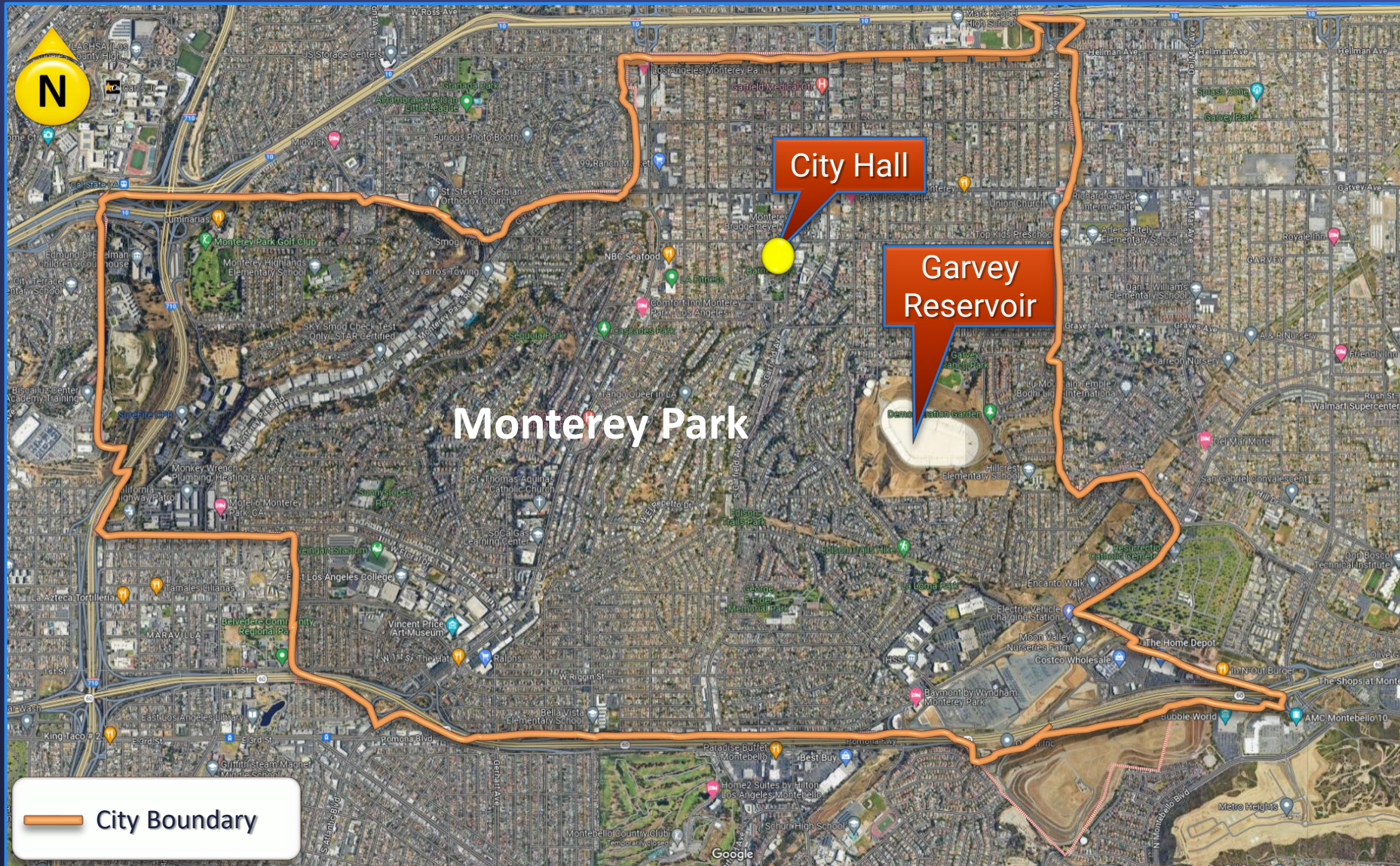
The mission of the Metropolitan Water District of Southern California is to provide its service area with adequate and reliable supplies of high-quality water to meet present and future needs in an environmentally and economically responsible way

Garvey Reservoir Rehabilitation

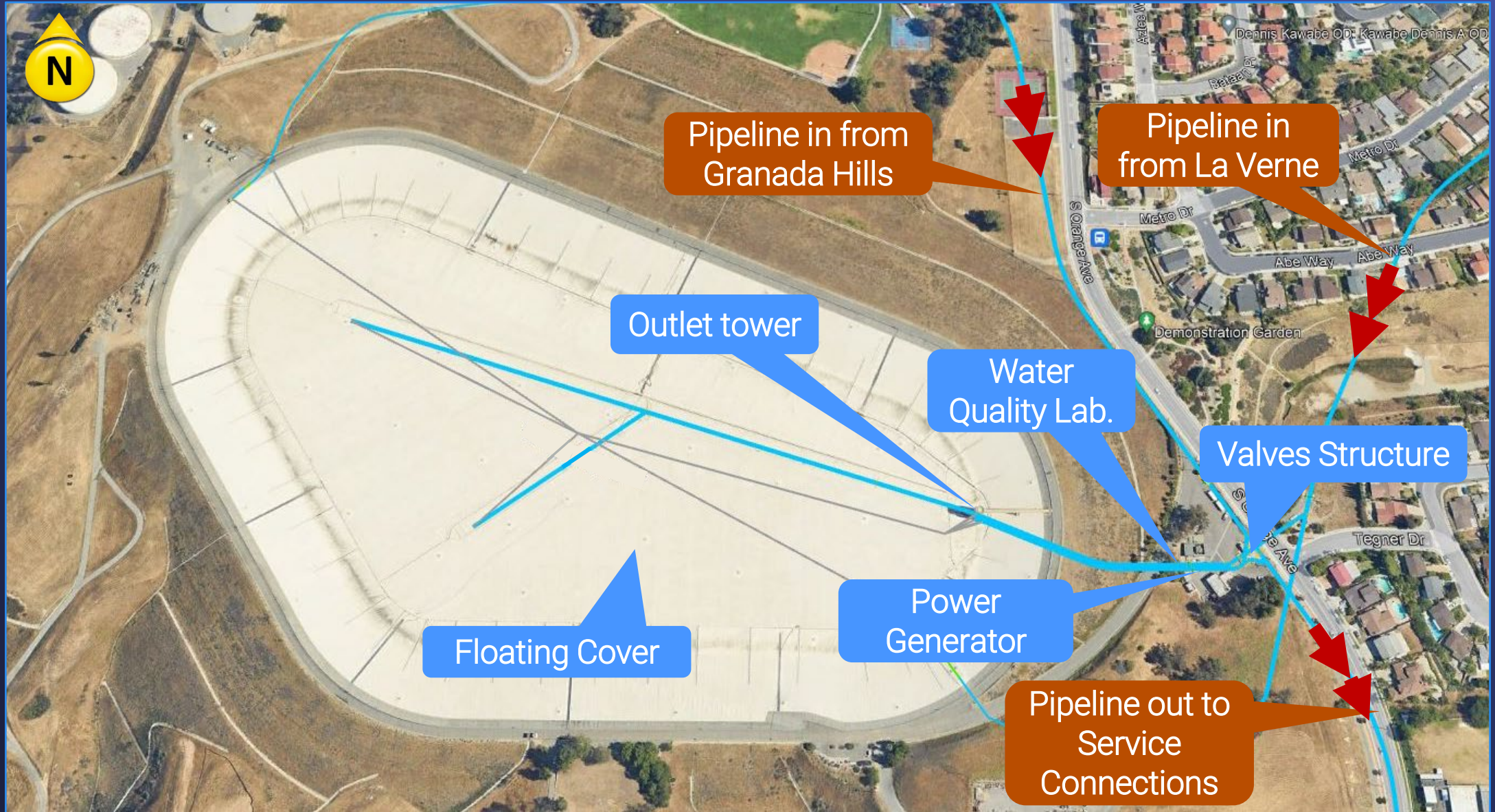
Project Description

- Improve major reservoir facilities
- Maintain Garvey Reservoir reliability
- Enhance site security
- Improve operations efficiency & maintenance

Garvey Reservoir Location in the City of Monterey Park



Garvey Reservoir – Birds Eye View



Key Project Components

Garvey Reservoir Rehabilitation



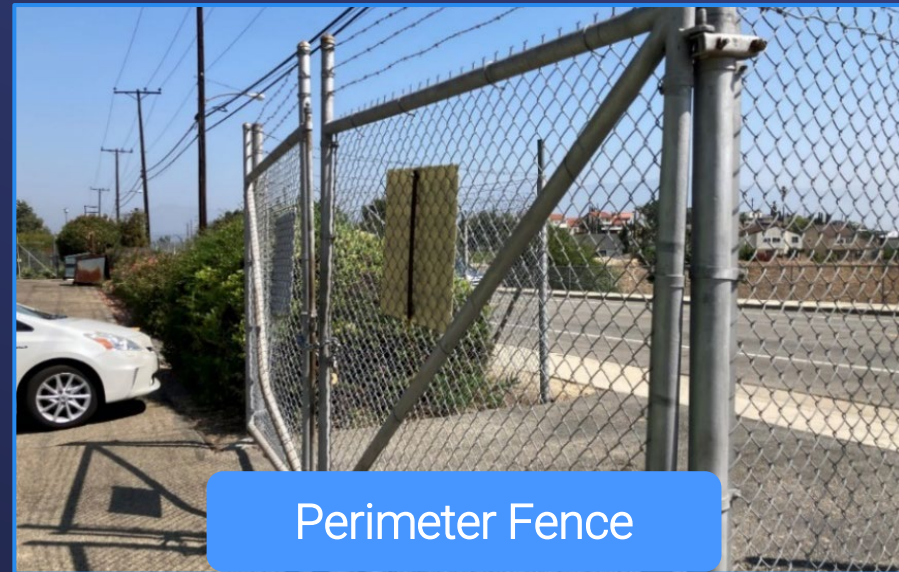
Cover and Outlet tower



Electrical & Water Quality Building



Emergency Power Generator



Perimeter Fence

California Environmental Quality Act (CEQA)



Identifies
potential impacts
to the environment

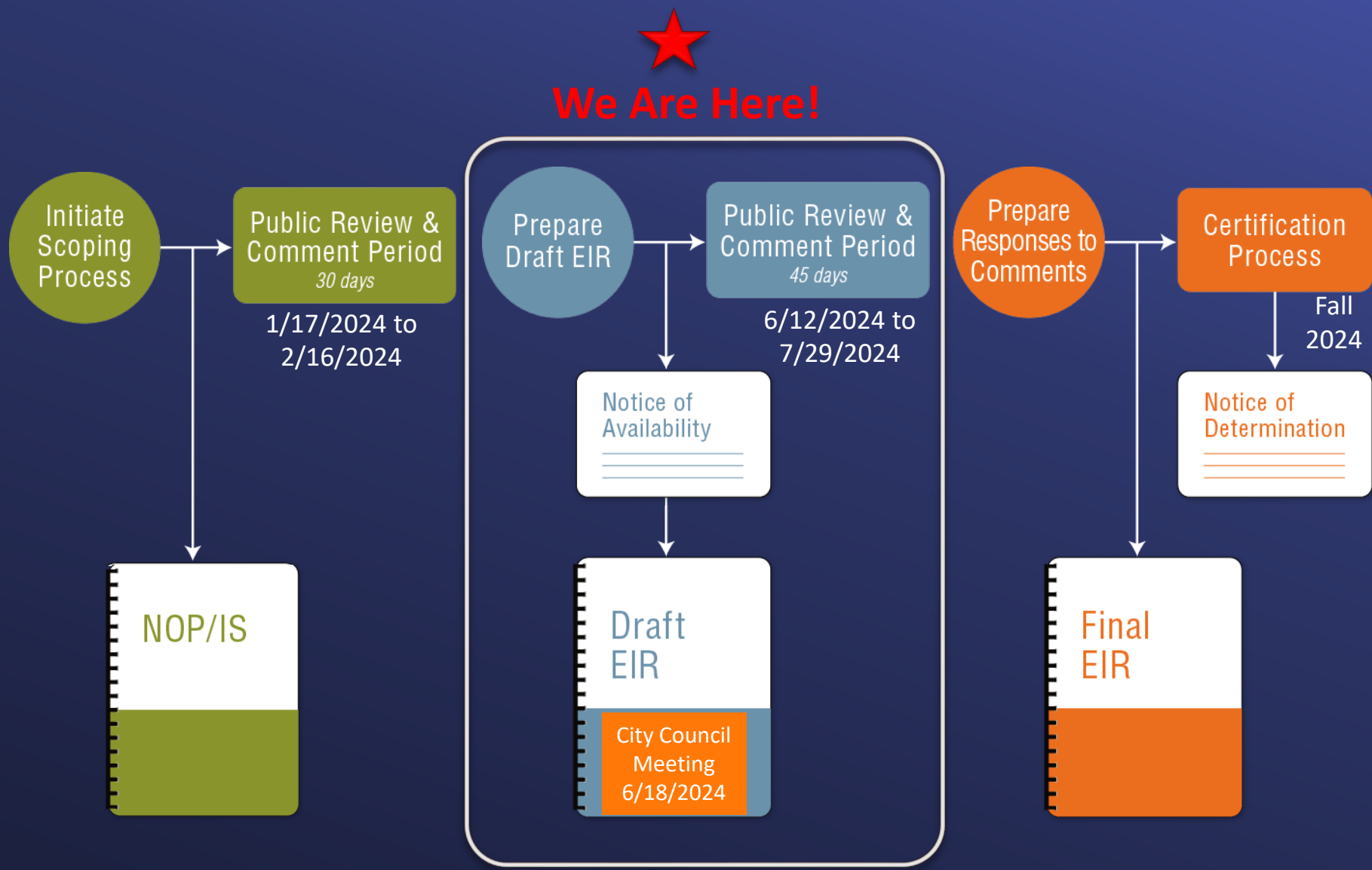


Informs the public
and decision makers
about potential
environmental impacts

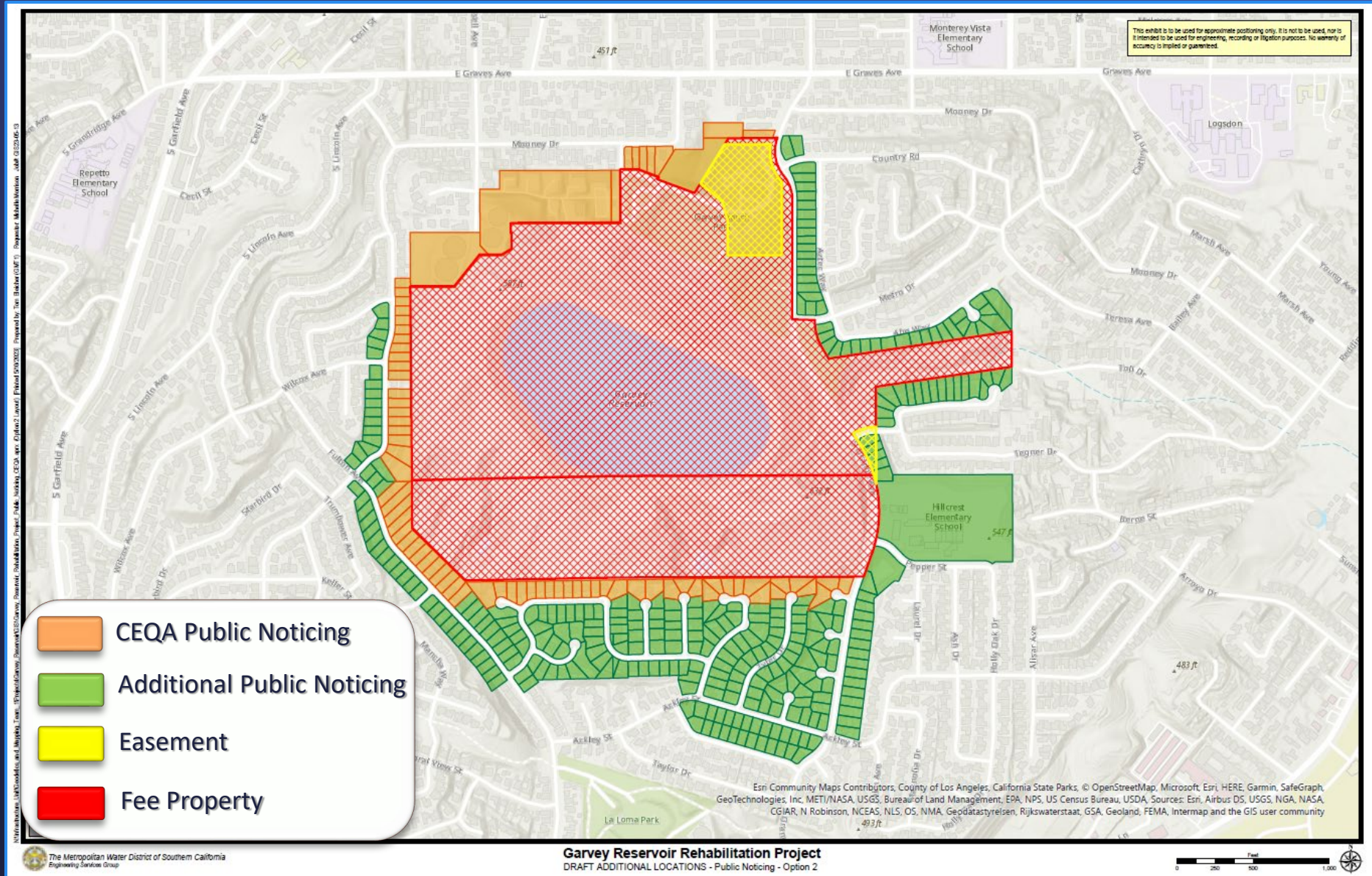


Identifies ways
to avoid or reduce
potential impacts

CEQA Process for an Environmental Impact Report (EIR)



Public Noticing Map



Resources Categories Analyzed

Draft EIR

- Less than significant – no mitigation required
 - Greenhouse Gas Emissions
 - Noise
 - Transportation
 - Tribal Cultural Resources
- Mitigation required
 - Air Quality

Air Quality

Mitigation – Construction Equipment

- During Construction Only
- Emissions reduction measures:
 - All diesel-fueled construction equipment EPA compliant (Tier 4 equipment); or
 - Electrically powered; and
 - Welders, portable generators shall be electrically-powered
 - Use of on-site electricity in lieu of generators

Schedule

